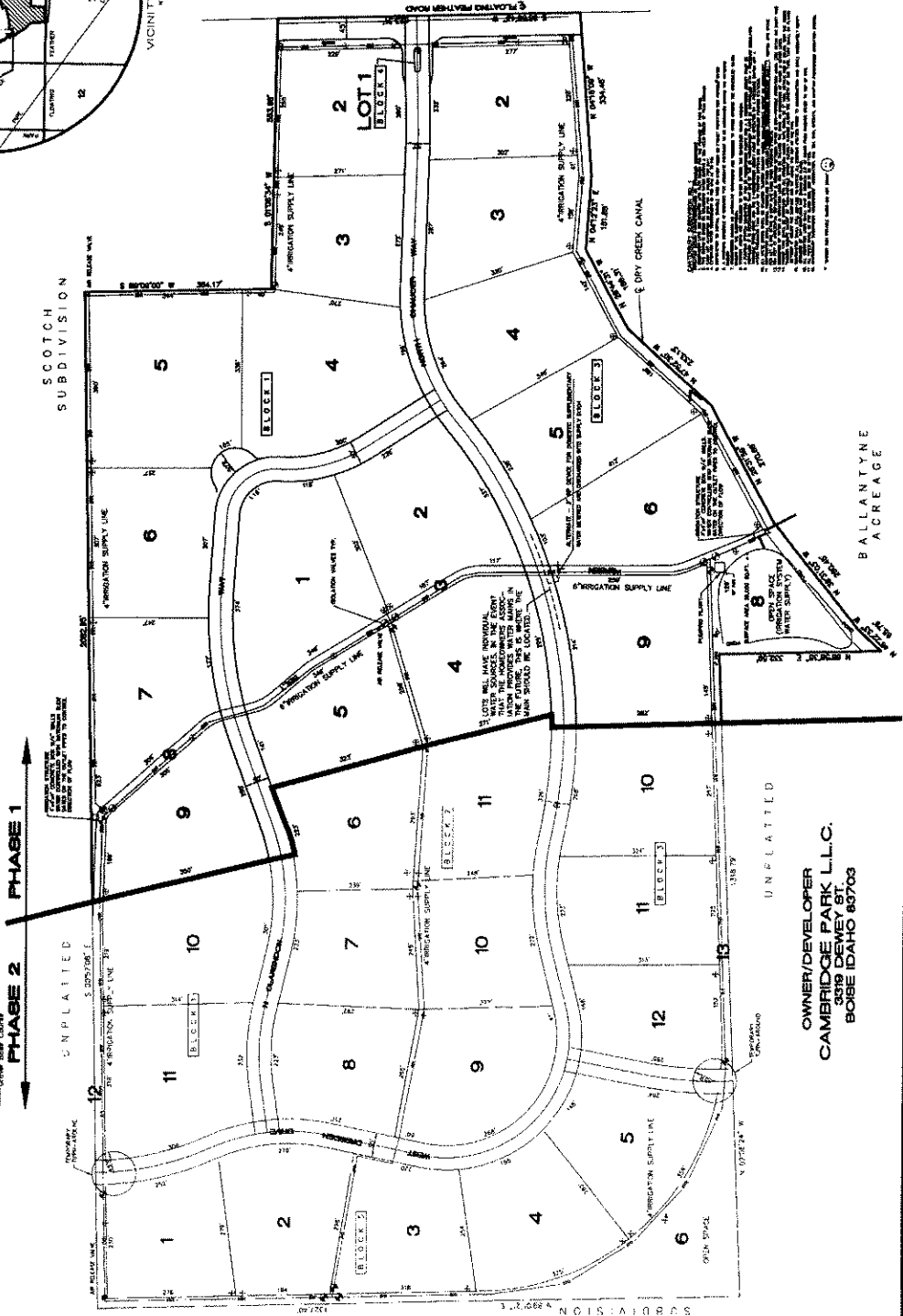
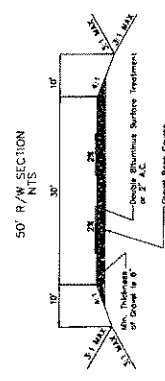
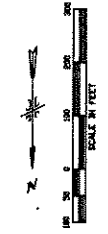
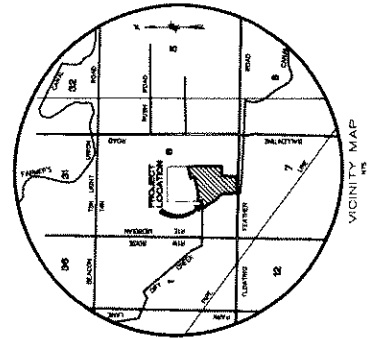


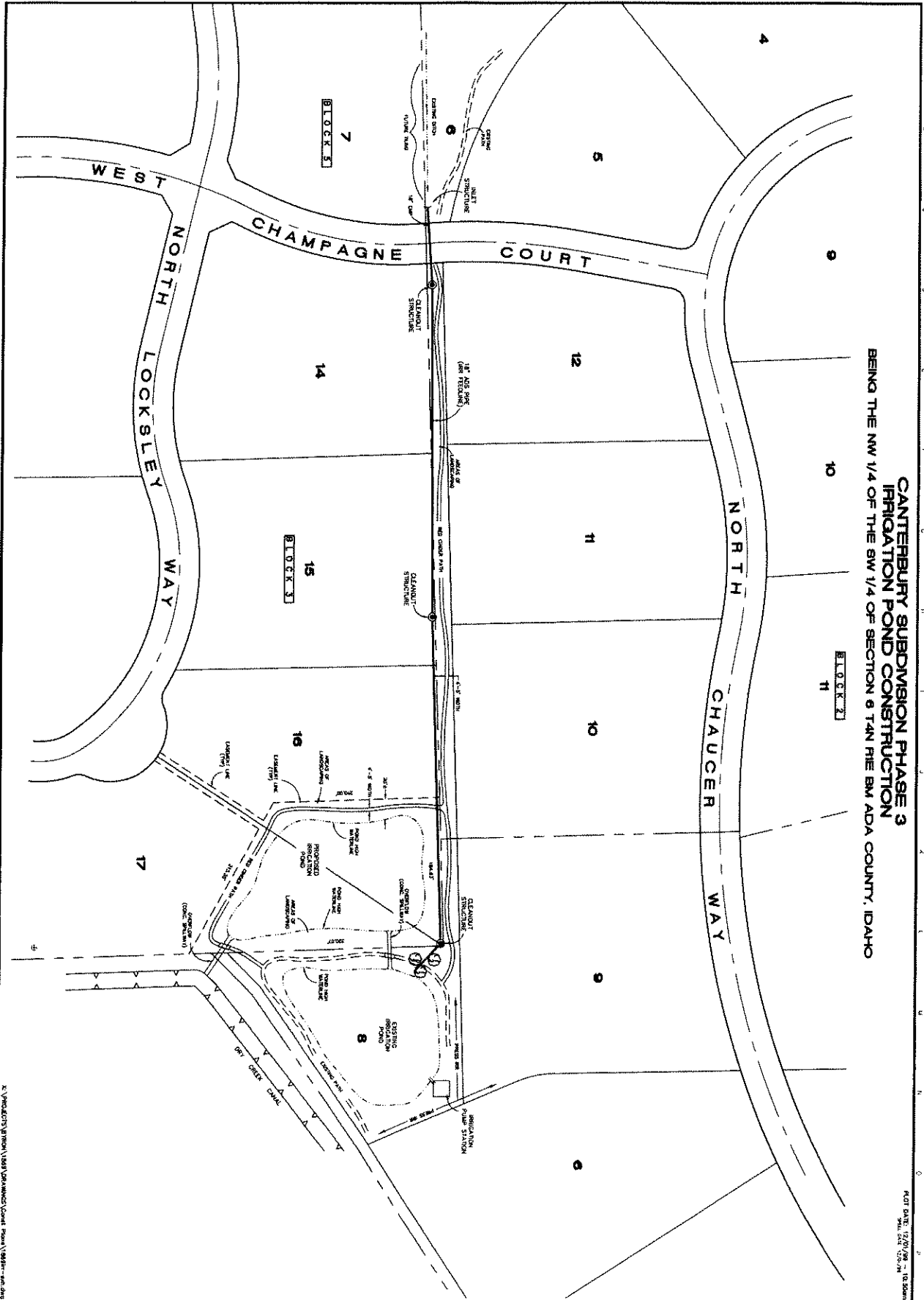
CANTERBURY SUBDIVISION NO. 1
 SITUATED IN THE SW 1/4 OF SECTION 5 T4N THE 6M ADA COUNTY DAMO



- LEGEND**
- OFFICE DOMESTIC WELL LOCATION
 - LOT SERVICE AREA ASSEMBLY
 - IRRIGATION MAIN
 - PRESSURIZED IRRIGATION LINE
 - RELEASE VALVE
 - IRRIGATION STRUCTURE
 - FLOWING WEATHER MARK

NOTES:
 1. ALL CONSTRUCTION SHALL BE IN ACCORDANCE WITH THE IRRIGATION ACT AND RULES THEREUNDER.
 2. THE IRRIGATION SYSTEM SHALL BE MAINTAINED IN GOOD ORDER AT ALL TIMES.
 3. THE IRRIGATION SYSTEM SHALL BE OPERATED IN ACCORDANCE WITH THE IRRIGATION ACT AND RULES THEREUNDER.
 4. THE IRRIGATION SYSTEM SHALL BE OPERATED IN ACCORDANCE WITH THE IRRIGATION ACT AND RULES THEREUNDER.
 5. THE IRRIGATION SYSTEM SHALL BE OPERATED IN ACCORDANCE WITH THE IRRIGATION ACT AND RULES THEREUNDER.
 6. THE IRRIGATION SYSTEM SHALL BE OPERATED IN ACCORDANCE WITH THE IRRIGATION ACT AND RULES THEREUNDER.
 7. THE IRRIGATION SYSTEM SHALL BE OPERATED IN ACCORDANCE WITH THE IRRIGATION ACT AND RULES THEREUNDER.
 8. THE IRRIGATION SYSTEM SHALL BE OPERATED IN ACCORDANCE WITH THE IRRIGATION ACT AND RULES THEREUNDER.
 9. THE IRRIGATION SYSTEM SHALL BE OPERATED IN ACCORDANCE WITH THE IRRIGATION ACT AND RULES THEREUNDER.
 10. THE IRRIGATION SYSTEM SHALL BE OPERATED IN ACCORDANCE WITH THE IRRIGATION ACT AND RULES THEREUNDER.
 11. THE IRRIGATION SYSTEM SHALL BE OPERATED IN ACCORDANCE WITH THE IRRIGATION ACT AND RULES THEREUNDER.
 12. THE IRRIGATION SYSTEM SHALL BE OPERATED IN ACCORDANCE WITH THE IRRIGATION ACT AND RULES THEREUNDER.

Cambridge 112
 RAC



**CANTERBURY SUBDIVISION PHASE 3
IRRIGATION POND CONSTRUCTION**
BEING THE NW 1/4 OF THE SW 1/4 OF SECTION 8 T4N R1E 8M ADA COUNTY, IDAHO

PLAT DATE: 12/07/08 - 10:00am
SCALE: 1" = 20.00'

JOB NUMBER
9907-1869

1 OF 1

IF APPROVED BY THE FOLLOWING APPLICABLE AGENCIES IT WILL BE DATED BELOW:

THE CONTRACTOR IS ADVISED TO VERIFY WITH THE AGENCIES THAT HE IS USING THE CORRECT PLANS PRIOR TO BEGINNING CONSTRUCTION.

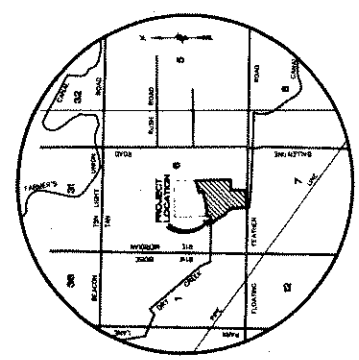
REVISION	DATE	BY



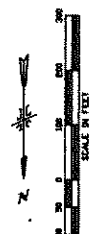
**CANTERBURY SUBDIVISION PHASE 3
IRRIGATION POND CONSTRUCTION**

ROYLANCE AND ASSOCIATES PA
Engineers Surveyors Landplanners
391 W State Street Suite E Eagle Idaho 83616 (208) 939-2824

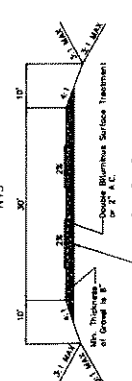
DATE	12/07/08
BY	
SCALE	1" = 20.00'
PROJECT	
DATE	
BY	
SCALE	
PROJECT	



CANTERBURY SUBDIVISION NO. 1
 SITUATED IN THE SW 1/4 OF SECTION 6 T4N 18E ADA COUNTY IDAHO

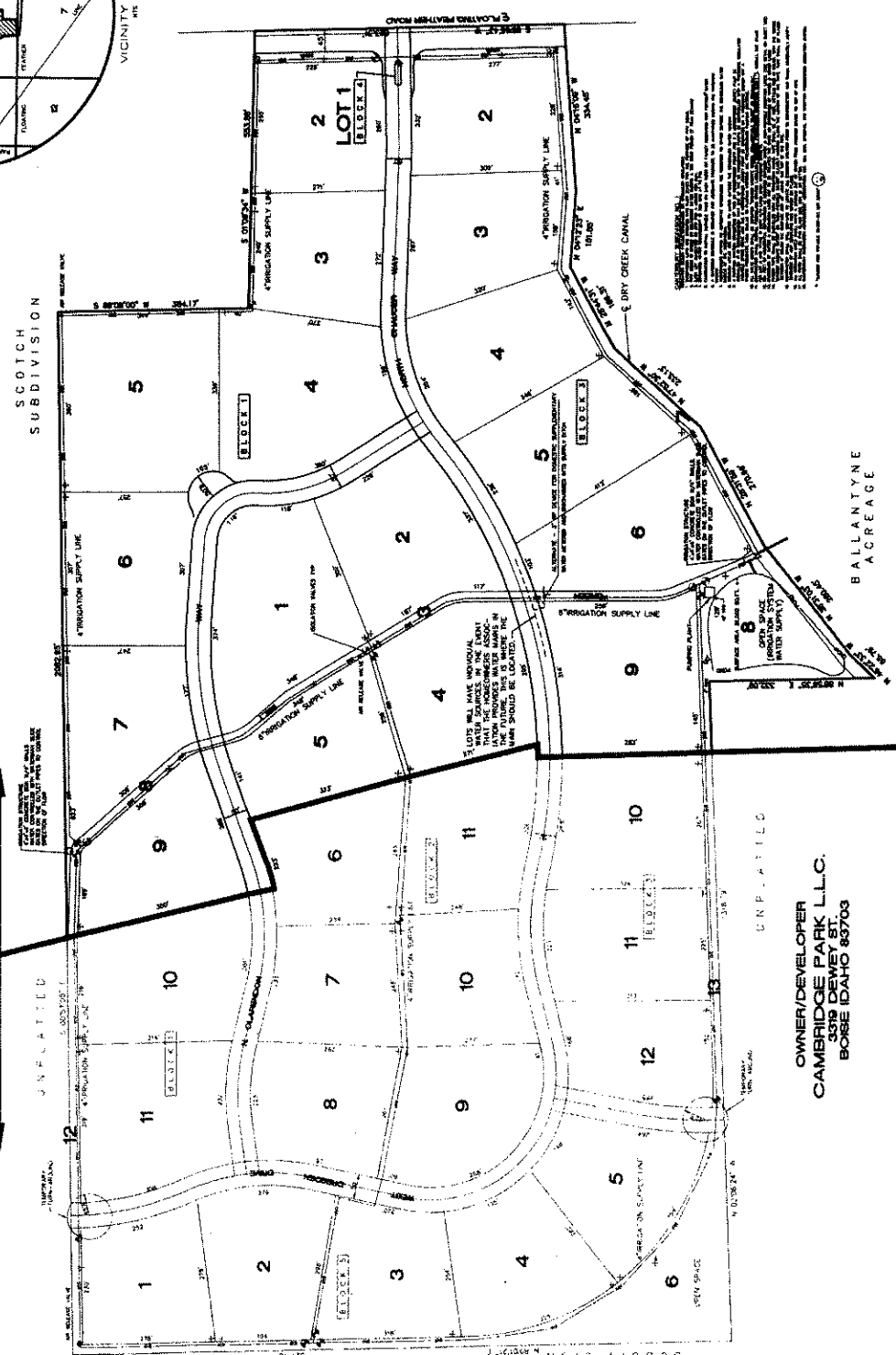


50' R/W SECTION N.T.S.



PHASE 1

PHASE 2



- LEGEND
- OFFSITE DOMESTIC WELL LOCATION
 - LOT BOUNDARY
 - SECTION LINE
 - PRELIMINARY IRRIGATION LINE
 - IRRIGATION SUPPLY LINE

IRRIGATION SUPPLY LINE SHALL BE CONSIDERED AS A PUBLIC UTILITY AND SHALL BE SUBJECT TO THE RULES AND REGULATIONS OF THE PUBLIC UTILITIES COMMISSION OF THE STATE OF IDAHO. THE IRRIGATION SUPPLY LINE SHALL BE MAINTAINED AND REPAIRED BY THE OWNER OF THE PROPERTY SERVING THE IRRIGATION SUPPLY LINE. THE IRRIGATION SUPPLY LINE SHALL BE SUBJECT TO THE RULES AND REGULATIONS OF THE PUBLIC UTILITIES COMMISSION OF THE STATE OF IDAHO. THE IRRIGATION SUPPLY LINE SHALL BE MAINTAINED AND REPAIRED BY THE OWNER OF THE PROPERTY SERVING THE IRRIGATION SUPPLY LINE.

ADD DATE: 5/9/96
 A. VORLAKIS, INC.

188 CM-08-14-3

CANTERBURY SUBDIVISION
PROPOSED PLAN

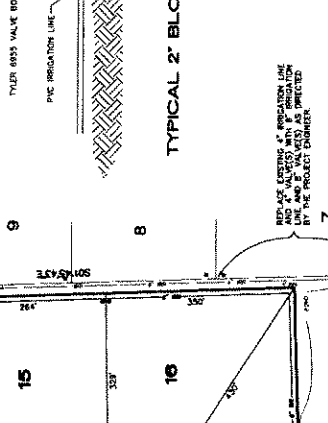
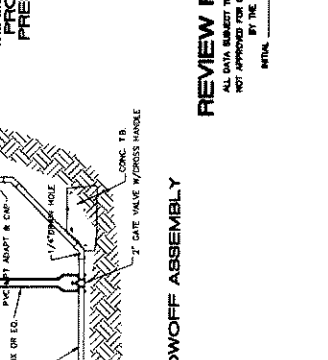
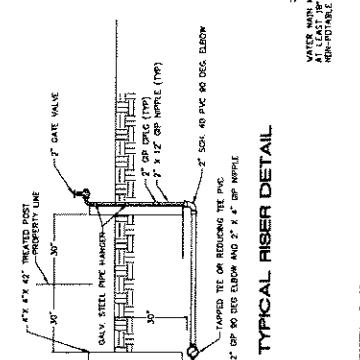
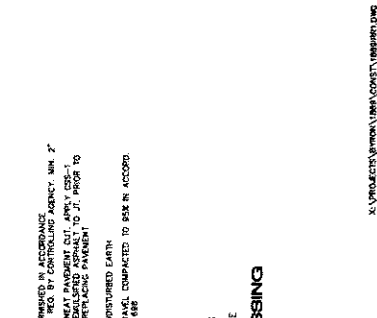
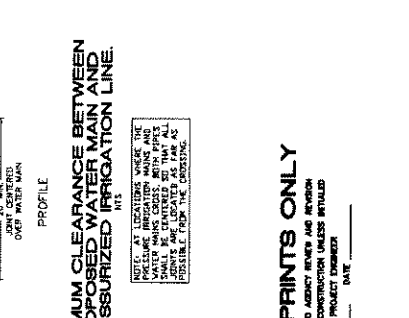
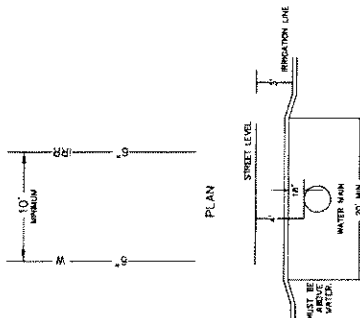
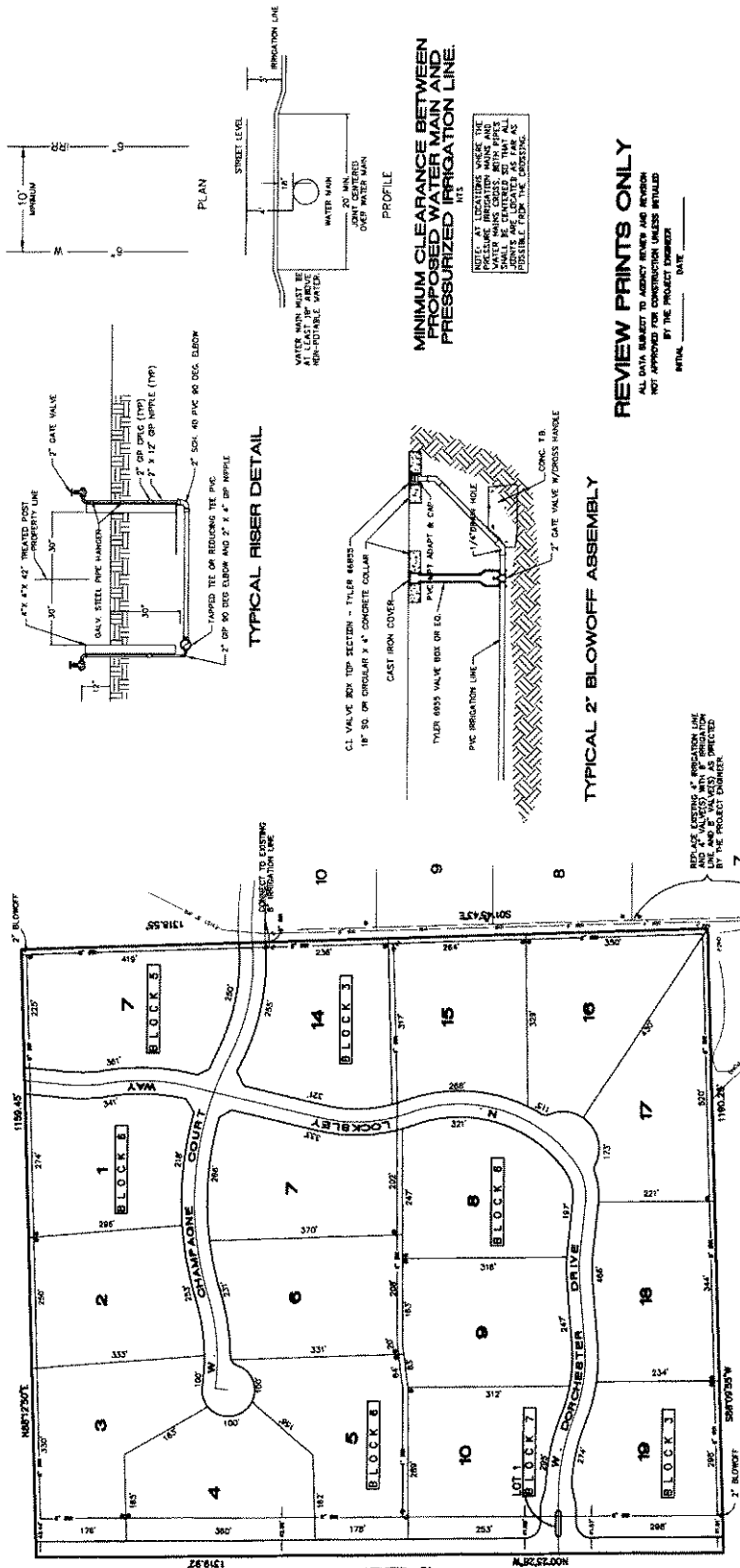
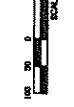
ROYLANCE AND ASSOCIATES PA
Engineers Surveyors Landplanners
391 W State Street Suite E Engle Idaho 83616 (208) 939-2824

APPROVED BY THE FOLLOWING AGENCIES

DATE	BY

JOB NUMBER 9803-1869
SHEET 10 OF 10

IRIGATION PLAN
 CANTERBURY SUBDIVISION
 BEING THE NW 1/4 OF THE SW 1/4 OF SECTION 6 T4N R1E BM ADA COUNTY IDAHO



- CANTERBURY SUBDIVISION NO. 8**
IRRIGATION DESIGN (UNAPPROVED FOR CONSTRUCTION)
1. SUBDIVISION LOTS ARE GRADUATED INTO FLOW ZONES FOR THE PURPOSE OF PIPE SIZING.
 2. PIPE SIZING IS BASED ON DELIVERING WATER DURING A TEN HOUR PERIOD OF PEAK DEMAND.
 3. CONTRACTOR TO INSTALL DRAINAGE TAGS ON EACH RISER ON FAULT INDICATING NON-POTABLE WATER.
 4. ESTIMATED WATER REQUIREMENT IS 510 GPM AT 70 PSI.
 5. WATER TREATMENT SCHEDULE IS REQUIRED FOR ADEQUATE PRESSURE TO BE MAINTAINED DURING THE WATERING WINDOW.
 6. AUTOMATIC SPRINKLERS ARE REQUIRED TO WATER OUTSIDE THE SCHEDULED WATER WINDOW.
 7. CHECK AREAS ARE REQUIRED TO WATER OUTSIDE THE SCHEDULED WATER WINDOW.
 8. ALL WATER MAINS SHALL BE UNDERGROUND TO TOP OF 24\"/>

* UNDER NON-POTABLE WATER--DO NOT DRINK